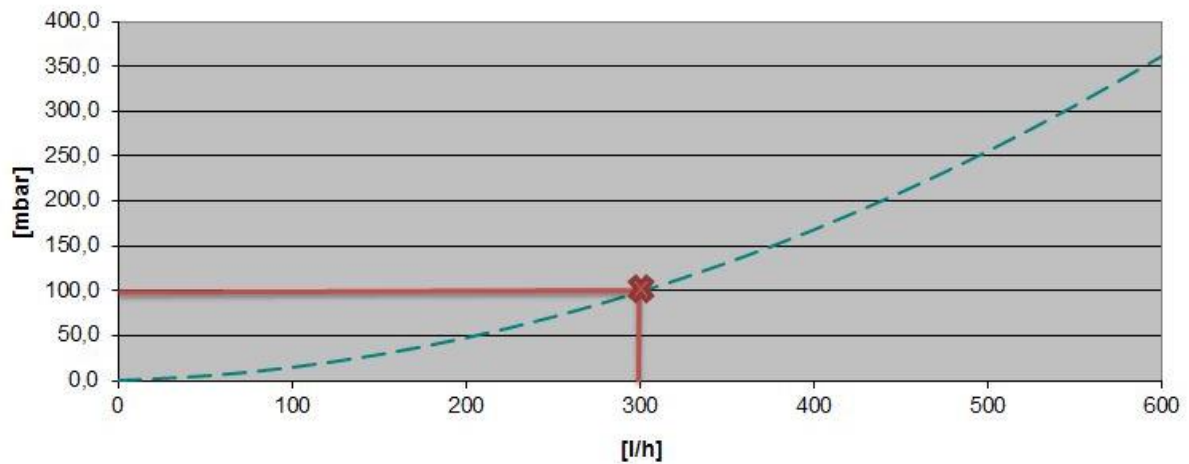


## Pressure Drop direct flow

### Pressure drop Weiser Power 800, Weiser Power 1000



The values refer to the 10-tube collector.  
For 20 or 30 tubes, the values must be multiplied  
by 2 or 3.

— DF-10

measurement by TÜV Rheinland 04/2011

Example:

- Collector field with 70 Tubes
- Set volume flow 70 Tubes = 5 l/min
- Convert to l/h = 300 l/h
- Reading Diagram: 10 Tubes and 300 l/h = 100 mbar pressure drop
- Calculate for 70 Tubes: 7 x 100 mbar = 700 mbar pressure drop

The pressure drop at a 70 – Tubes-system is 700 mbar.

**ATTENTION:** Please note all planning, installation and commissioning instructions. These are available for you at any time under <http://akotec.eu/downloads/>.