



## Abstract of References Private Applications



**place:** multi-family house, Luzern, Schweiz  
**plant:** approx. 8,1 m<sup>2</sup>, 50 direct flow Power tubes  
**application:** domestic water heating

**place:** multi-family house + holiday apartment, Angermünde, Germany  
**plant:** approx. 21 kW<sub>p</sub>, 34,5 m<sup>2</sup>, 210 direct flow tubes, tubes horizontal mounted, 4.000 l storage, absorber angle approx. 60° optimum  
**application:** heating and domestic water heating support (little district heating network)



**place:** single-family house, Kekava, Latvia  
**plant:** approx. 6 kW<sub>p</sub>, 10 m<sup>2</sup>, 60 direct flow Power tubes, 10 m<sup>2</sup>, 800 l storage, absorber angle 60° optimum  
**application:** domestic water heating and heating support

**place:** single-family house, Laichingen, Germany  
**plant:** approx. 6 kW<sub>p</sub>, 9,6 m<sup>2</sup>, 4 x 15 direct flow tubes, 9,6 m<sup>2</sup>, horizontal balcony mounting, 500 l storage, absorber 45° optimum  
**application:** domestic water heating





**place:** single-family house, Austria  
**plant:** approx. 8,8 kW<sub>p</sub>, 12,8 m<sup>2</sup> (80 tubes)  
 800 l storage  
**application:** heating support and domestic water heating

**place:** single-family house, Woodstock, Canada  
**Anlage:** approx. 12 kW<sub>p</sub>, 19,5 m<sup>2</sup>, 120 direct flow tubes, 1.000 l storage  
**application:** heating support and domestic water heating



**place:** St. Anna, Austria  
**plant:** approx. 60 kW<sub>p</sub>, 14,5 m<sup>2</sup>, 90 direct flow Power tubes, 800 l storage  
**application:** heating support and domestic water heating

**place:** single-family house, Athens, Greece  
**plant:** 3,2 m<sup>2</sup>, 40 direct flow tubes, 800 l storage  
**application:** domestic water heating





**place:** Nordhausen, Germany  
**plant:** approx. 12 kW<sub>p</sub>, 120 direct flow Power tubes, 800 l storage, Absorber 45° optimum, elevation for north faces roof  
**application:** domestic water heating and heating support



**place:** single-family house, Limasol, Zypern  
**plant:** 2,4 kW<sub>p</sub>, 4,8 m<sup>2</sup>, 30 direct flow Röhren  
**application:** domestic water heating

**place:** single-family house, Waldalgesheim, Germany  
**plant:** approx. 6,6 kW<sub>p</sub>, 9,7 m<sup>2</sup>, 60 direct flow Power tubes in horizontal assembly  
**application:** domestic water heating and heating support



**place:** single-family house, Berlin, Germany  
**plant:** approx. 5 kW<sub>p</sub>; 50 direct flow Power tubes, 8m<sup>2</sup>, 500 l storage, absorber 45° optimum, roof for terrace  
**application:** domestic water heating



**place:** single-family house, Overath, Germany  
**plant:** 3,2 kW<sub>p</sub>, 6,5 m<sup>2</sup>, 40 direct flow Power tubes  
**application:** domestic water heating



**place:** single-family house, Deggenhausertal, Germany  
**plant:** approx. 5,5 kW<sub>p</sub>, 11,4 m<sup>2</sup>, 70 direct flow tubes, elevation  
**application:** domestic water heating and heating support

**place:** single-family house, Phabos, Zypern  
**plant:** approx. 4,8 kW<sub>p</sub>, 9,78 m<sup>2</sup>, 60 direct flow tubes  
**application:** domestic water heating and heating support



**place:** single-family house, Meppen, Germany  
**plant:** approx. 6 kW<sub>p</sub>, 9,8 m<sup>2</sup>, 60 heat pipe tubes  
**application:** domestic water heating and heating support



**place:** single-family house, Bad Zwischenahn, Germany  
**system:** ca. 8,8 kW<sub>p</sub>, 12,8 m<sup>2</sup>, 80 heat pipe tubes, 800 l solar-combi stratified storage  
**application:** heating support and domestic water heating

**place:** single-family house, Meppen, Deutschland  
**system:** ca. 16 kW<sub>p</sub>, 25,6 m<sup>2</sup>, 160 heat pipe tubes, 1.000 l buffer storage  
**application:** heating support and domestic water heating





## Commercial Applications



**place:** Senior Residence, Woodstock, Canada  
**plant:** approx. 325 kW<sub>p</sub>, 3240 direct flow Power tubes = 162 fields, 13.000 l storage, Absorption chiller Yasaki WCF-5C30, cooling power: 105 kw (weight: 1,8 t) 1.200 m pipeline  
**application:** domestic water heating, heating support, pool, cooling

**place:** Telekom Datacentre, Rottweil, Germany  
**plant:** 300 kW<sub>p</sub>, 503,44 m<sup>2</sup>, 3100 direct flow Power tubes (62 x collector fields with 50 tubes), 20.000 l storage, expansion tank: 2 x 600 l, Absorption chiller: 2 x Mitsubishi Type ES-1A elevation  
**application:** solar cooling for computer centre



**place:** Hotel, Hurghada, Egypt  
**plant:** approx. 50 kW<sub>p</sub>, 78,5m<sup>2</sup>, 480 direct flow Power tubes, flat roof mounting, 5.000 l storage  
**application:** sea water desalination

**place:** Hafencity Hotel 25 hours, Hamburg, Germany  
**plant:** approx. 77 kW<sub>p</sub>, 125,4 m<sup>2</sup>, 2 fields of 280 and 490 direct flow Power tubes, flat roof mounting, 3 x 1500 l storage tanks  
**application:** domestic water heating





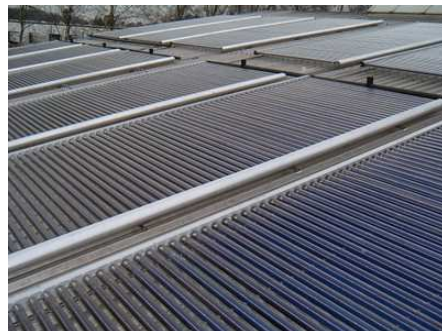
**place:** Logistic centre, Lehrte, Germany  
**plant:** approx. 25 kW<sub>p</sub>, 39,5 m<sup>2</sup>, 240 direct flow Power tubes  
**application:** heating support

**place:** „Hafencity Hofquartier“, Hamburg, Germany  
**plant:** approx. 56 kW<sub>p</sub>, 86,5 m<sup>2</sup>, 540 direct flow Power tubes, flat roof  
**application:** heating support



**place:** Prenzlau, Germany  
**plant:** 136 m<sup>2</sup>, 840 direct flow Power tubes, flat roof mounting  
**application:** solar cooling

**place:** paint shop, Meppen, Germany  
**plant:** approx. 84 kW<sub>p</sub>, 137m<sup>2</sup>, 70 direct flow Power tubes = 12 fields, 2 x 5.000 l storages  
**application:** process heat for painting and drying

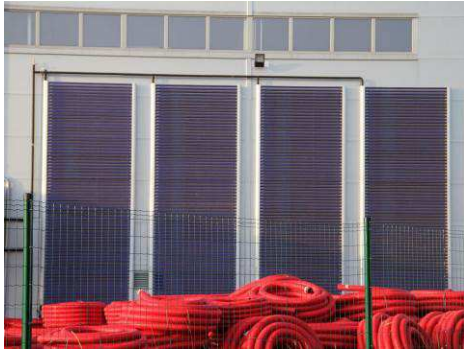




**place:** specialist wholesaler, Luckenwalde, Germany

**plant:** approx. 3,9 kW<sub>p</sub>, 50 direct flow tubes, 8,14 m<sup>2</sup>, flat roof mounting

**application:** domestic water heating



**place:** industrial facade, Kekava, Latvia

**plant:** approx. 29 kW<sub>p</sub>, 45,2 m<sup>2</sup>, 280 direct flow Power tubes

**application:** heating support